



Doors & windows

Thermally insulated profile systems
made from steel and stainless steel

Minimal heat loss

Maximum stability

Doors and windows symbolise openness and provide a way in for people, light and air. But they also protect from external influences. The individual requirements for thermal insulation and sound reduction or burglar and bullet resistance determine how doors and windows are to be constructed.

The thermally insulated door and window systems of the Janisol series in steel or stainless steel impress with excellent U values (thermal transmittance) and feature narrow face widths.

The door and window systems of the Janisol series are suitable for dry and wet glazing, while the door systems are also available with easy-access thresholds. Whether it be in public buildings, residential construction or renovation projects – the wide Janisol range with its differentiated, combinable profile series will meet the most demanding of requirements for thermal insulation. The Janisol systems are also at the forefront in terms of security, mechanical strength and durability.

The range includes the following profile series:

- Janisol doors (steel and stainless steel): with a basic depth of just 60 mm, suitable for complex single and double-leaf doors.
- Janisol windows (steel and stainless steel): for generous window surfaces with slimline frame profiles. Turn/tilt, bottom-hung, horizontal pivot and double-vent windows are all possible.
- Janisol Primo (steel): highly thermally insulated window system with a basic depth of 60 mm.
- Janisol HI (steel): highly-insulating – the first Minergie-certified steel window and door system in Switzerland.
- Janisol Arte (steel): slender thermally insulated windows with face widths of 25 and 40 mm; ideal for the faithful renovation of industrial and loft glazing as well as the windows of listed buildings.

The Janisol systems have successfully passed the tests laid down in the product standard EN 14351-1.

On this basis, manufacturers can label windows and external doors with the CE mark which is obligatory throughout the EU.



Janisol steel systems

Doors and windows



Janisol doors – Proven technology in perfect harmony

The flush-fitted profile series is ideally suited for creating visually attractive and structurally sophisticated single and double-leaf doors. The use of high-quality insulating bars and mechanically undercut rolling means that a high degree of rigidity is achieved despite a minimal basic depth of 60 mm. Structural reinforcements can also be easily added. The glass fibre reinforced insulating bars are heat-resistant. As a result, no special precautions are

required before welding the frames. The range of colours available is virtually unlimited; powder coating and wet coating are both possible. The appearance is coordinated to match the other Jansen door systems for fire and smoke protection. The sight lines are practically identical. For the developer, this guarantees that sight lines are identical even where requirements are different.



Janisol anti-finger-trap doors – Safety and design perfectly combined

The rounded half profiles minimise the risk of injury at the secondary closing edge. This then prevents crushing and shearing points as per DIN 18650. With maintenance-free, high-performance hinge bushes, Janisol anti-finger-trap doors are particularly suitable for buildings with high frequency use by the public, e.g. shopping centres, schools

or hospitals. The Janisol anti-finger-trap door meets the product standard EN 14351-1 for external doors and is CE certified.

The anti-finger-trap doors are compatible with the Janisol and Jansen-Economy 60 range of profiles. Integrated door closers and automatic side-hung door drives can also be installed.



Janisol windows – Modern technology with a classical appearance

Torsionally rigid, welded frames allow large windows with extremely slender profiles. Arched windows, structural reinforcement and aesthetic adaptations of standard steel profiles can also be produced cost-effectively in individual units and small quantities. As a result, the Janisol system is very much in demand, not only for newbuilds, but also for renovation projects.

Our range of products is completed by a system-compatible and easy-to-install range of fittings (surface-mounted or concealed). Side-hung, turn/tilt, bottom-hung, horizontal pivot and double-vent windows, fixed glazing or combinations of these are all possible.



Janisol Primo – High-quality insulation in the smallest of spaces

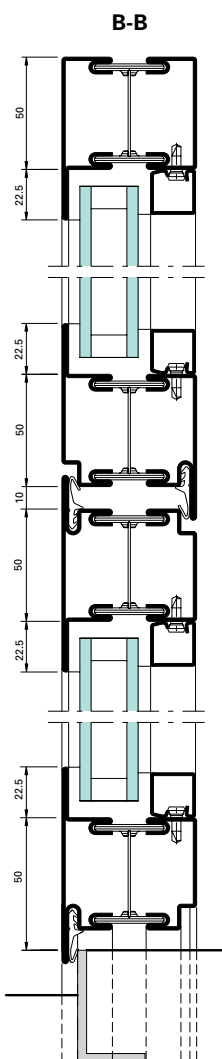
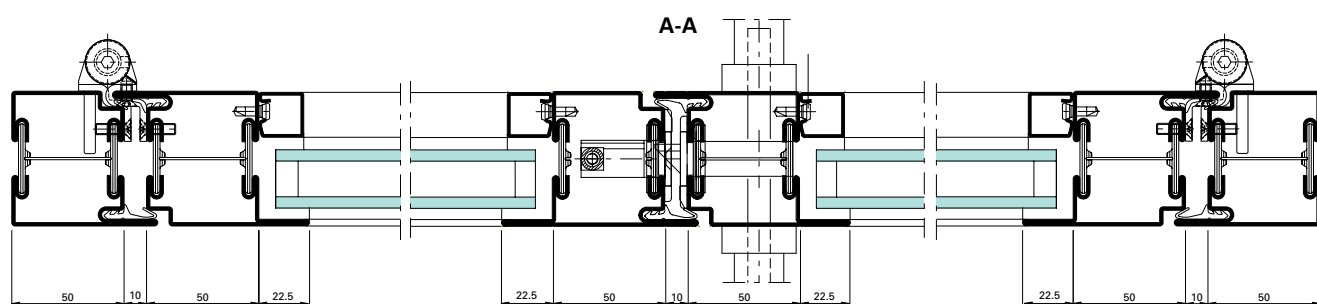
This thermally insulated profile system with a construction height of only 60 mm (64 mm vent) enables efficient fabrication of fixed glazing and windows (side-hung, turn/tilt, double-vent and bottom-hung). All window vents have a centre gasket and a rebate gasket on the room side. We stock a range of system-tested fittings with single-handed operation and multi-point locking for all possible opening types.

Identical profile cross-sections greatly simplify the fabrication of Janisol Primo, and also allow them to be combined with tried-and-tested Janisol profiles.

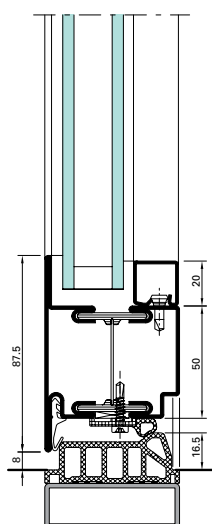
As a holistic approach to buildings is adopted, energy saving measures and thermal insulation are playing an ever-greater role. For both economic and ecological reasons, the window should be accorded greater importance.



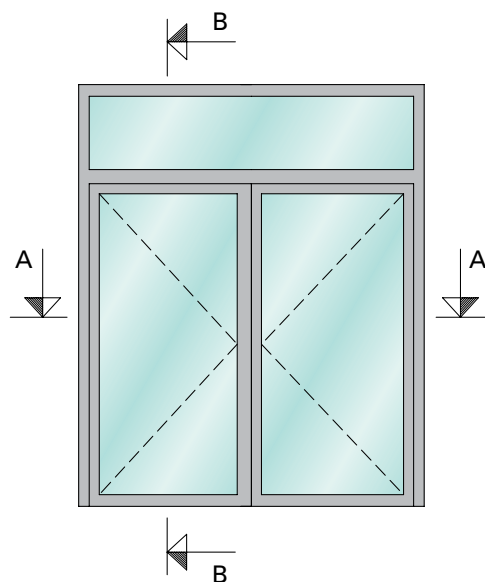
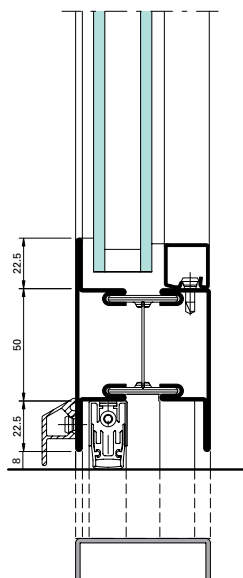
Example of Janisol doors



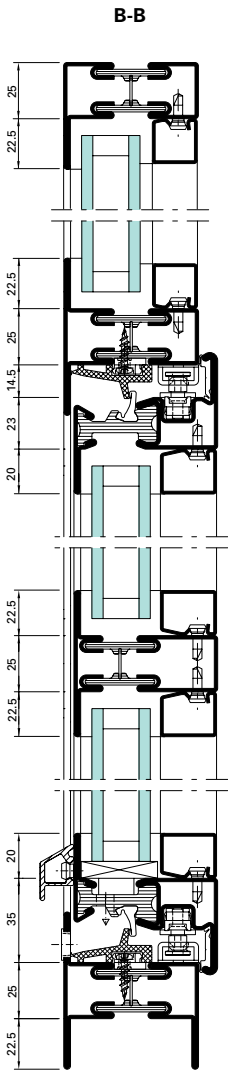
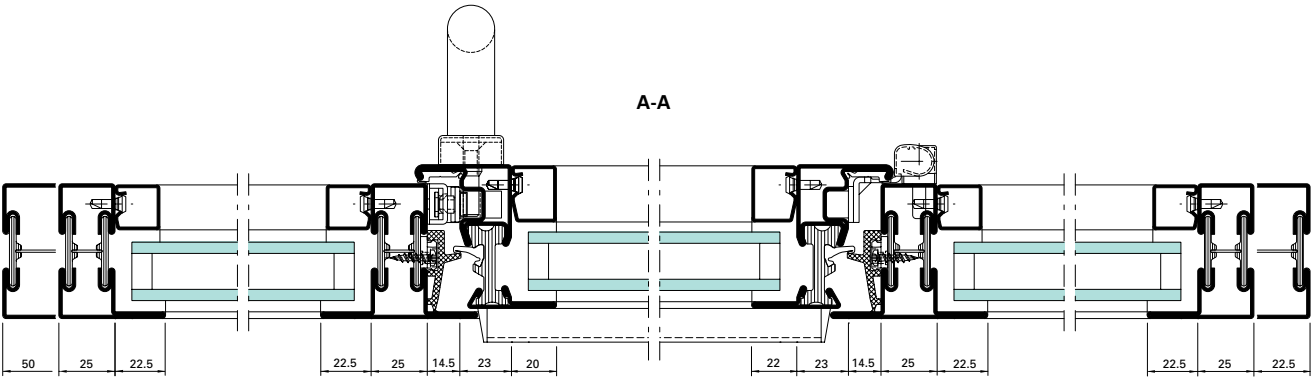
Alternative



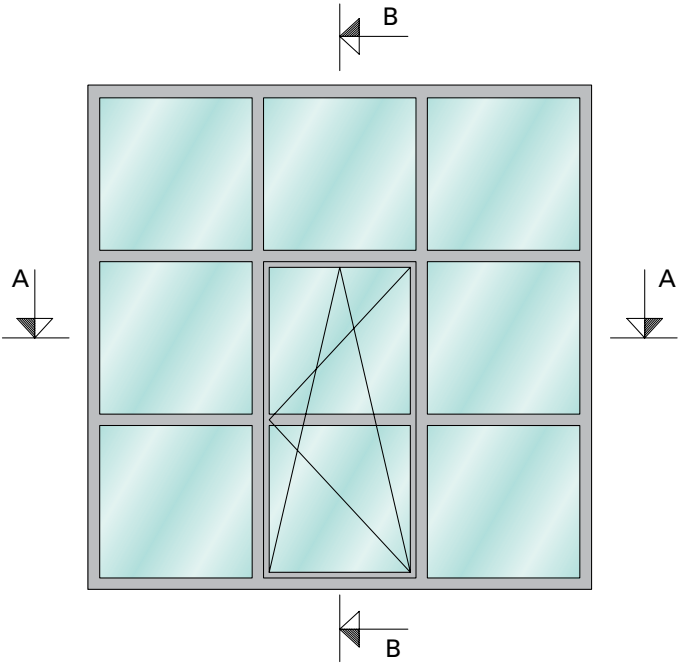
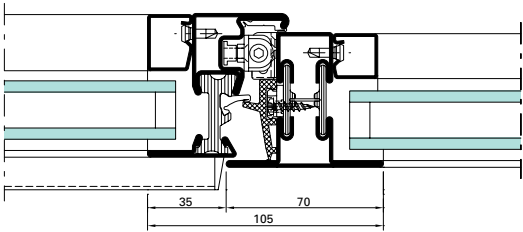
Alternative



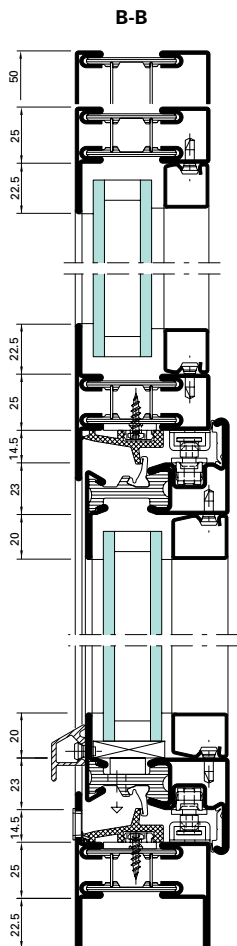
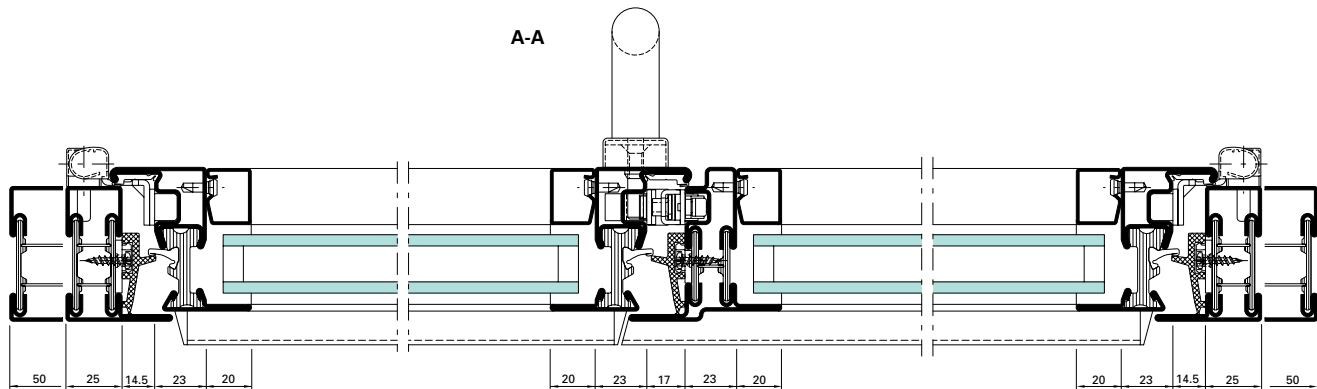
Example of Janisol windows



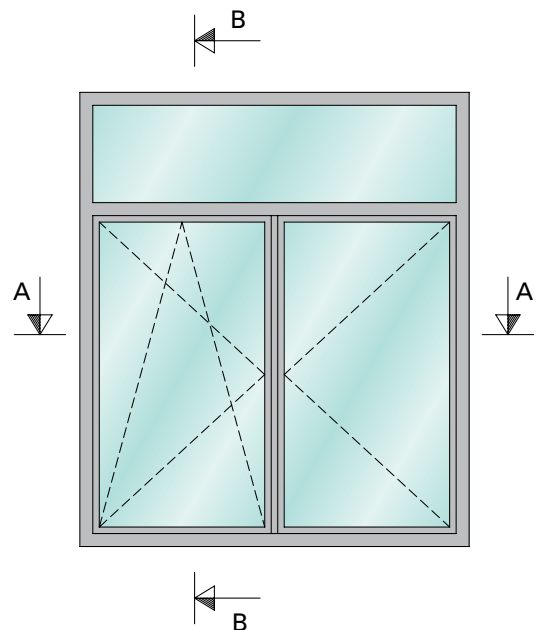
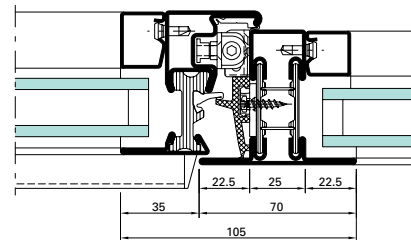
Concealed window fitting



Example of Janisol Primo windows



Concealed window fitting







Janisol stainless steel Doors and windows



Janisol stainless steel doors

The thermally insulated stainless steel profiles are based on tried and tested Janisol technology. Profiles and sizes are the same as those in the Janisol range. This makes it possible for the designer to combine both types of steel easily and for the fabricator to use identical accessories and fabrication tools. The range is complemented by a comprehensive range of stainless steel fittings. The profile surface is available from stock in a mill finish or polished.

Janisol stainless steel windows

Whether you are considering using stainless steel for functional or aesthetic reasons, Janisol windows meet both requirements. A comprehensive range of fittings enables the construction of side-hung, turn/tilt, double-vent and bottom-hung windows.

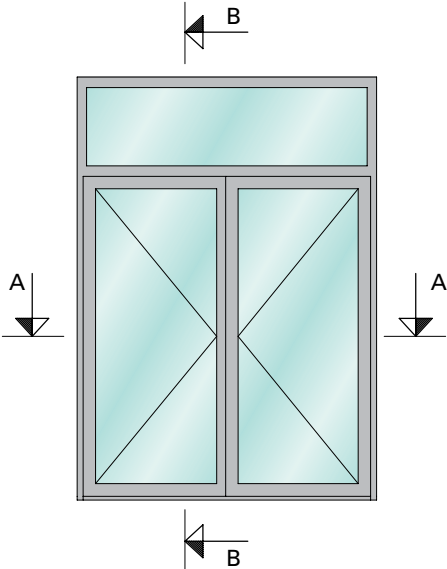
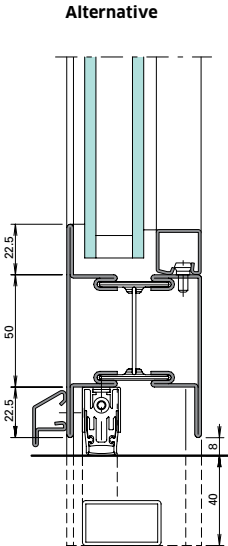
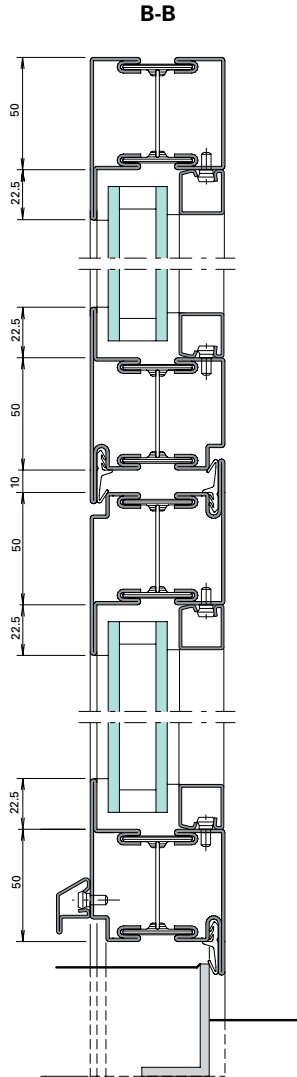
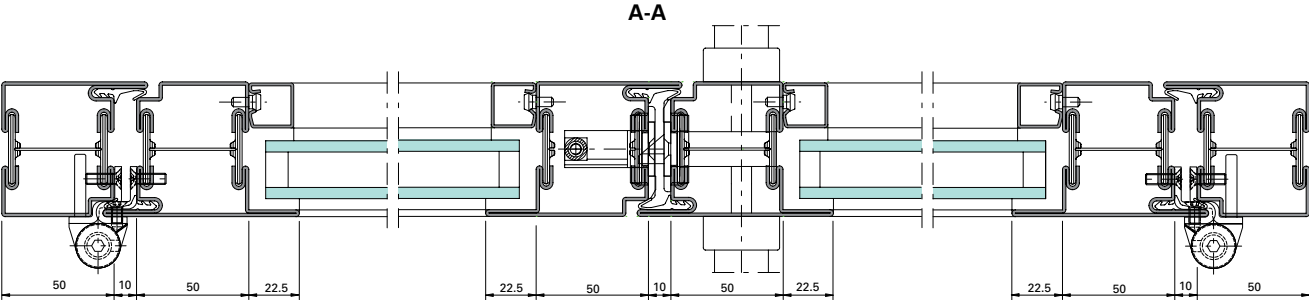
These slimline, thermally insulated stainless steel profiles complement the tried-and-tested Janisol range, adding a variant made from stainless steel of grade 1.4401 (AISI 316).

This material is particularly suitable for use:

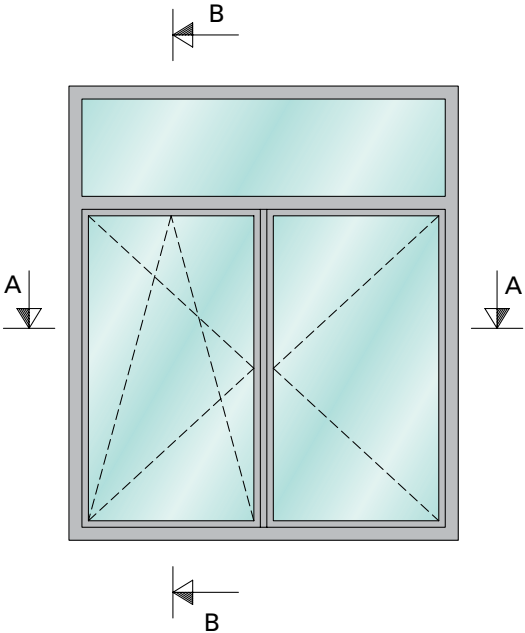
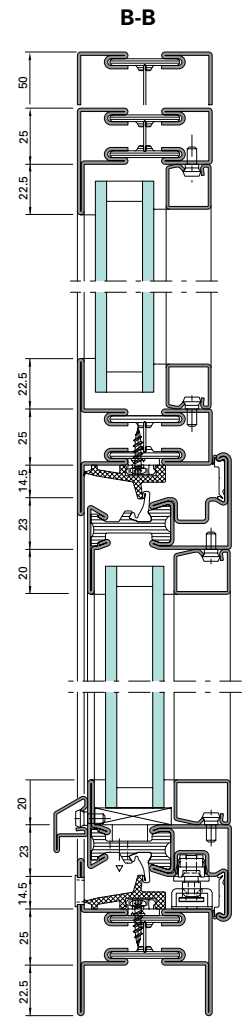
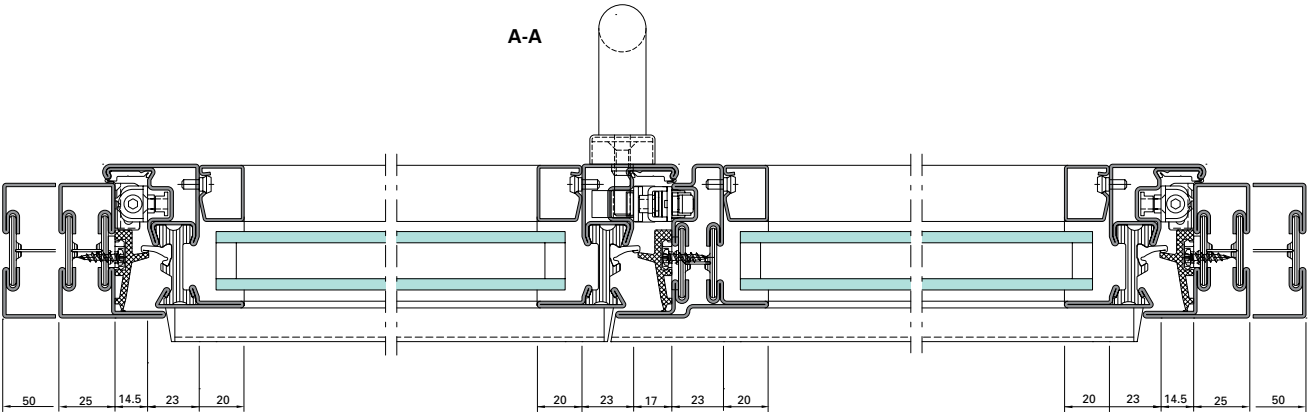
- In industrial areas
- In coastal areas (salty air)
- In areas with strict hygiene requirements
- Near roads (withstands salt and grit)



Example of Janisol stainless steel doors



Example of Janisol stainless steel windows



Janisol folding wall

Flexible room design



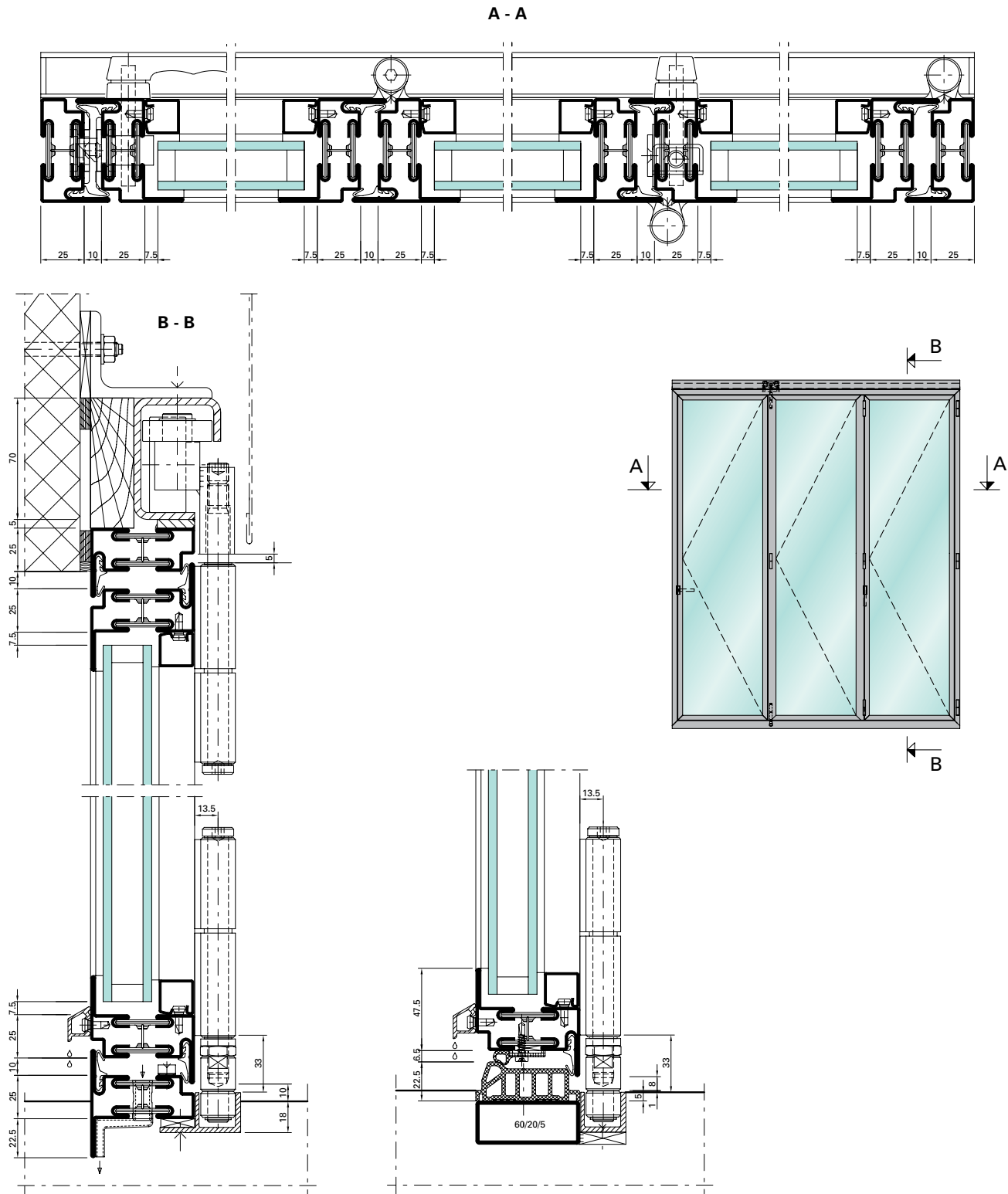
Steel folding wall – thermally broken

The Janisol folding wall is based on the Janisol thermally insulated system. Flexible in use, the Janisol folding wall system can be used as a room divider as well as for outside areas, and can be inward or outward-opening. A compatible range of fittings and accessories ensures proper, smooth

and quiet operation. A range of designs is available for the threshold. Depending on the size and loading, profiles with a face width of 25 mm or 50 mm can be used. The load-bearing capacity of the top running gear is up to 200 kg, which in turn permits leaf weights of up to 100 kg.

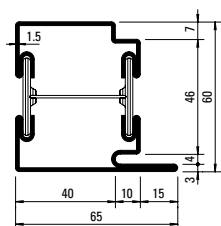


Example of Janisol folding wall

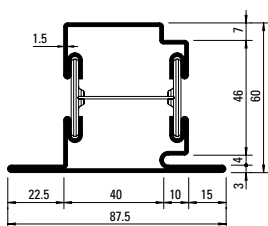


Profile range

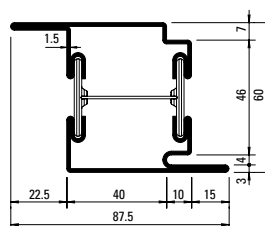
Janisol doors and windows



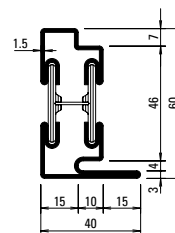
630.013
630.013 Z
[630.013.01](#)
[630.013.03](#)



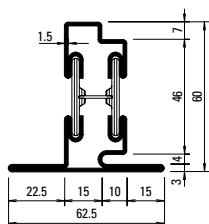
630.114
630.114 Z
[630.114.01](#)
[630.114.03](#)



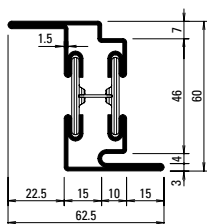
630.416
630.416 Z
[630.416.01](#)
[630.416.03](#)



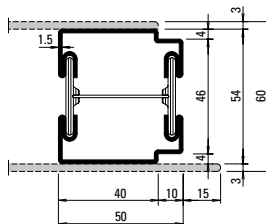
630.010
630.010 Z



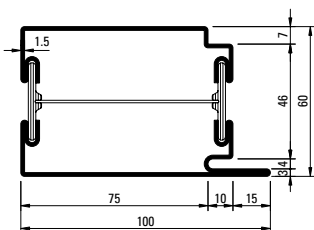
630.110
630.110 Z



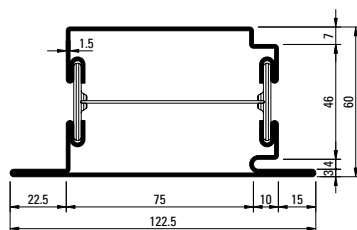
630.411
630.411 Z



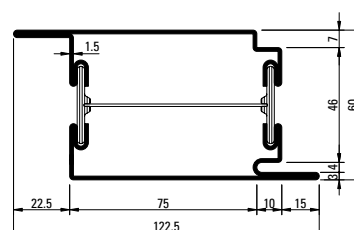
600.010 Z



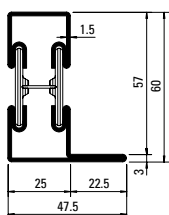
630.016
630.016 Z
[630.016.01](#)
[630.016.03](#)



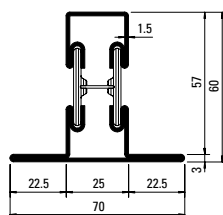
630.115
630.115 Z



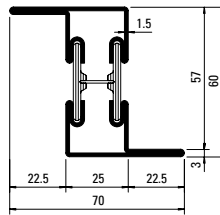
630.417
630.417 Z



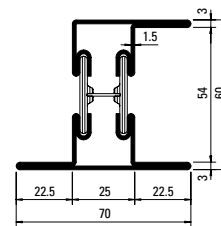
601.635
601.635 Z
[601.635.01](#)
[601.635.03](#)



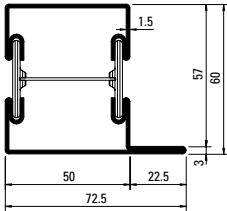
602.635
602.635 Z
[602.635.01](#)
[602.635.03](#)



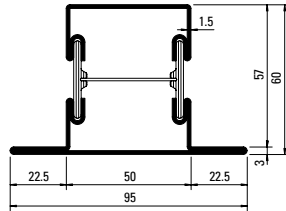
603.635
603.635 Z
[603.635.01](#)
[603.635.03](#)



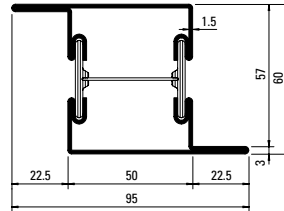
605.635
605.635 Z
[605.635.01](#)
[605.635.03](#)



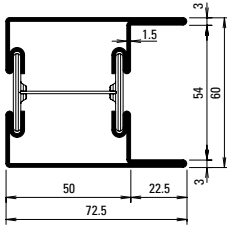
601.685
601.685 Z
[601.685.01](#)
[601.685.03](#)



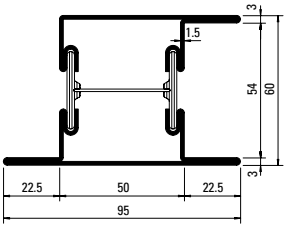
602.685
602.685 Z
[602.685.01](#)
[602.685.03](#)



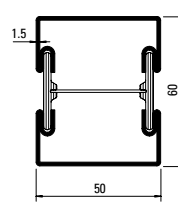
603.685
603.685 Z
[603.685.01](#)
[603.685.03](#)



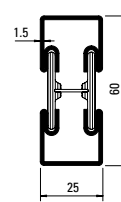
604.685
604.685 Z
[604.685.01](#)
[604.685.03](#)



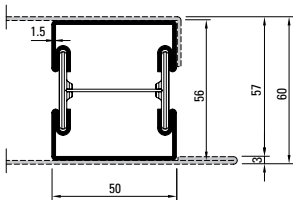
605.685
605.685 Z
[605.685.01](#)
[605.685.03](#)



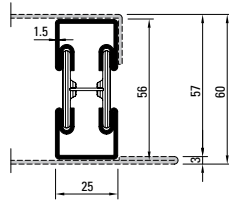
600.005
600.005 Z



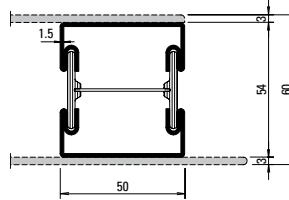
600.006
600.006 Z



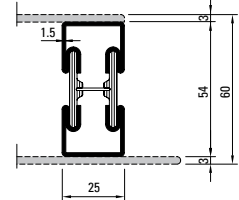
600.001
600.001 Z



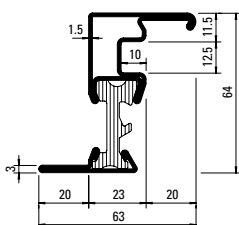
600.002
600.002 Z



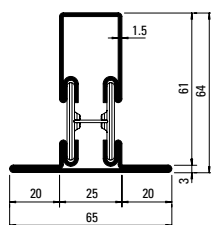
600.007 Z



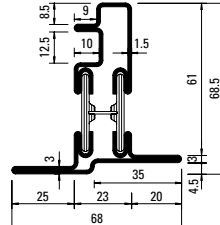
600.008 Z



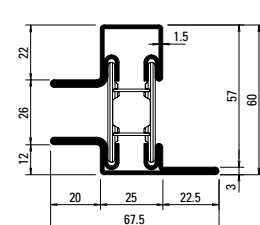
630.900
630.900 Z
[630.900.01](#)
[630.900.03](#)



602.636
602.636 Z



630.901 Z
[630.901.01](#)
[630.901.03](#)



601.699.6
601.699.6 Z

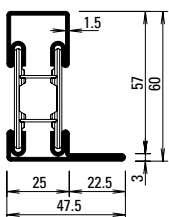
Z = made from hot-dip
galvanised strip

[01](#) = Stainless steel, bright
material 1.4401 (AISI 316)

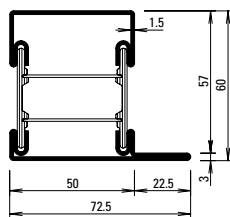
[03](#) = Stainless steel polished,
grain 220-240
material 1.4401 (AISI 316)

Profile range

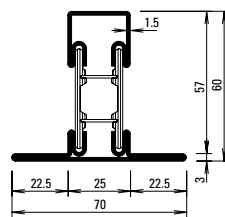
Janisol Primo windows



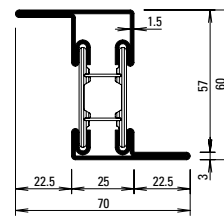
601.635.6 Z



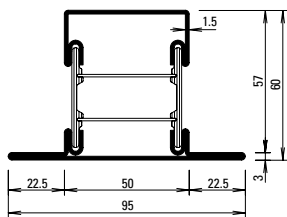
601.685.6 Z



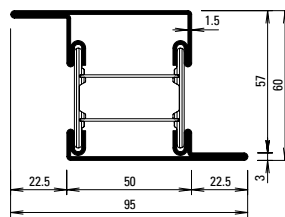
602.635.6 Z



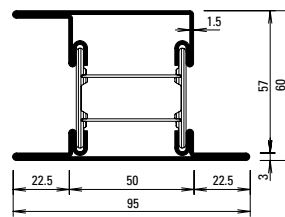
603.635.6 Z



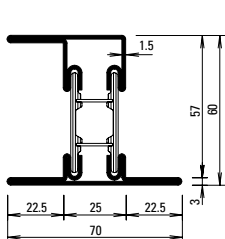
602.685.6 Z



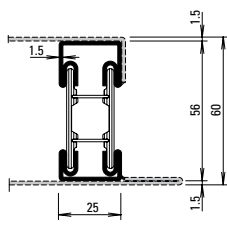
603.685.6 Z



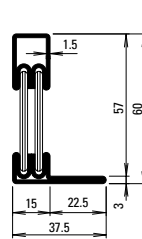
605.685.6 Z



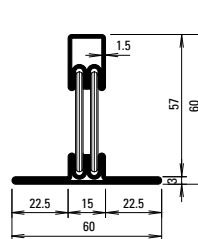
605.635.6 Z



600.002.6 Z



601.634.6 Z



602.634.6 Z

Z = made from hot-dip galvanised strip



Janisol HI

For powerful insulation



Highly insulated steel doors reduce thermal transmittance to a minimum

In busy public buildings in particular, the requirements for security, durability and thermal insulation have increased dramatically. Janisol HI steel doors conveniently combine mechanical stability with high thermal insulation properties in one single steel profile system.

Thanks to insulating bars made from glass fibre-reinforced polyurethane, Janisol HI achieves U_d values to $1.0 \text{ W/m}^2\text{K}$.

With a basic depth of 80 mm, infill unit thicknesses of up to 56 mm can be used. A comprehensive and coordinated range of fittings and accessories, as well as a range of thresholds, which can be selected to suit the situation, provide the perfect solution for all possible applications. Thanks to the specially formed insulating bars, the lock can be installed in the centre of the profile very easily and efficiently.



Steel windows with optimum thermal break

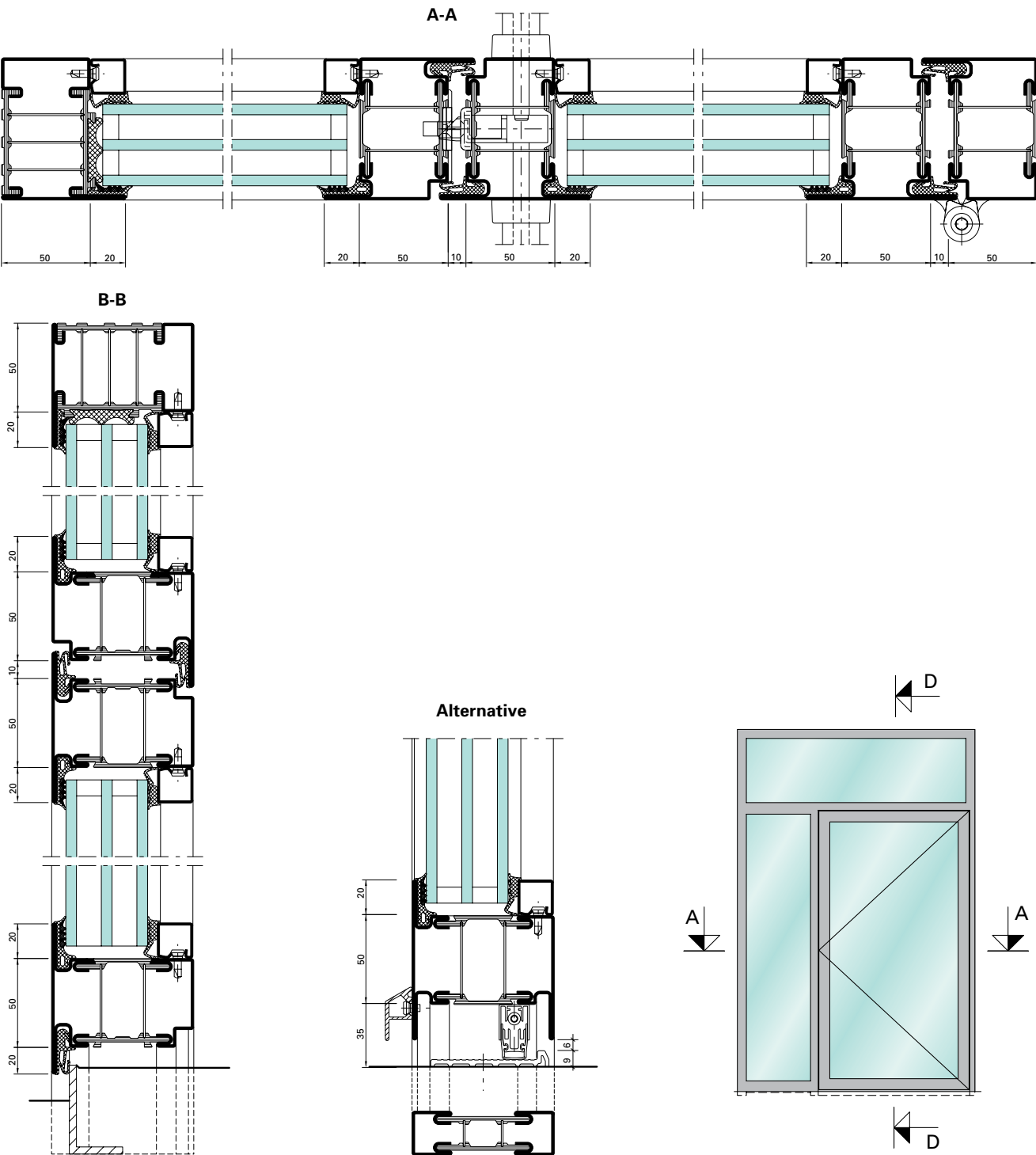
Modern windows must meet a number of different demands and perform a variety of functions. They must save energy, be airtight, watertight and easy to use, meet structural requirements, but also be highly attractive. Janisol HI steel windows and fixed glazing feature insulating bars made from glass fibre-reinforced polyurethane and boast optimum thermal and structural properties. They achieve U_w values to $0.69 \text{ W/m}^2\text{K}$ for fixed

glazing and $0.8 \text{ W/m}^2\text{K}$ for windows. With a basic depth of 90 mm, vent heights of up to 2800 mm and a vent weight of 180 kg are possible. What is more, different infill unit thicknesses of up to 66 mm can be used. Due to the slimline external face width and the wide variety of coating options, Janisol HI steel windows can meet high thermal insulation requirements in terms of both function and design.

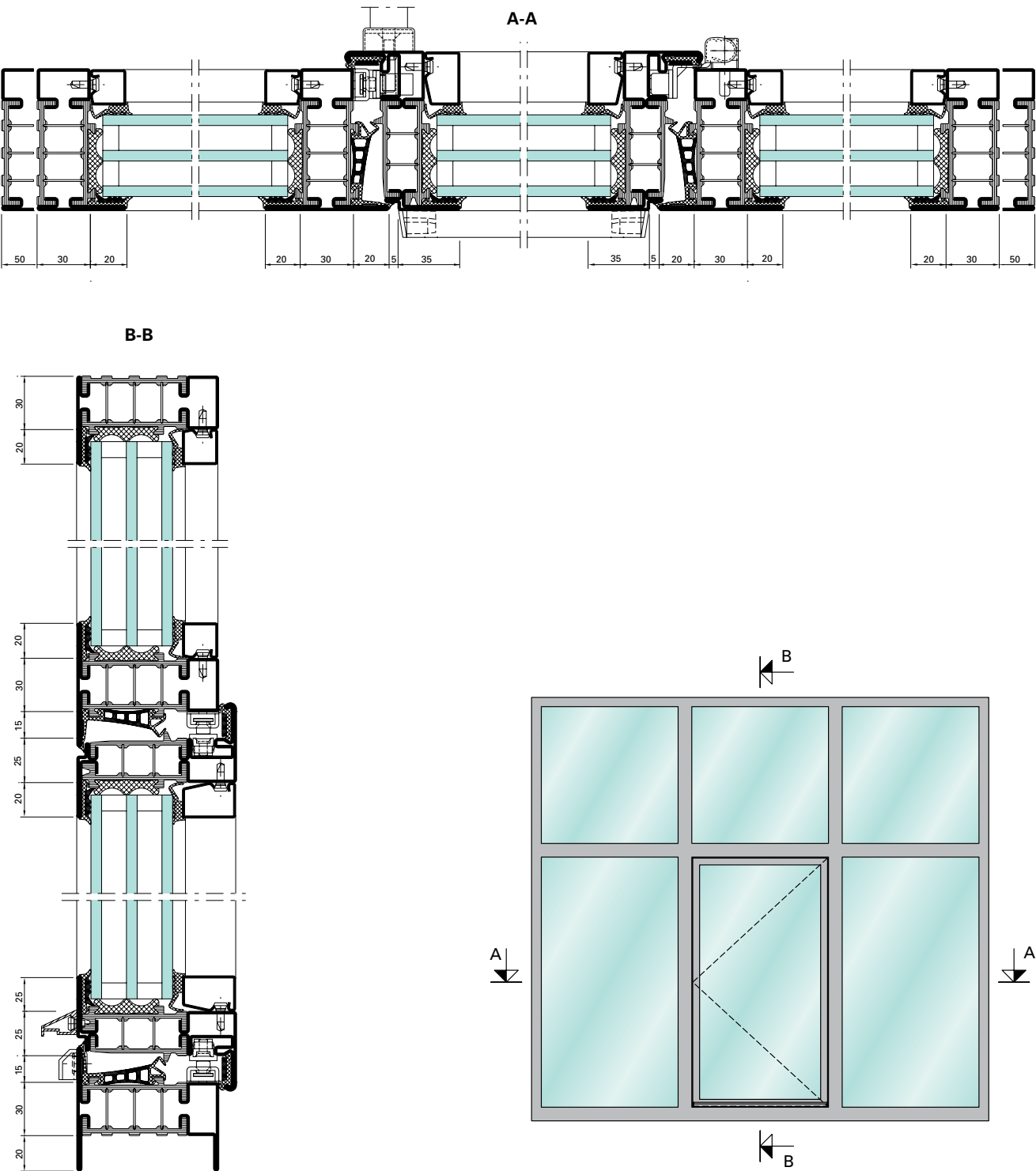




Example of Janisol HI doors



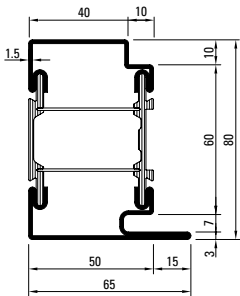
Example of Janisol HI windows



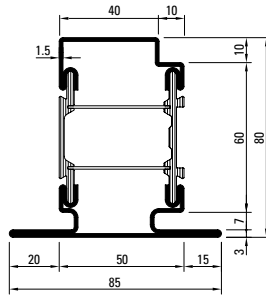
Profilsortiment

Janisol HI

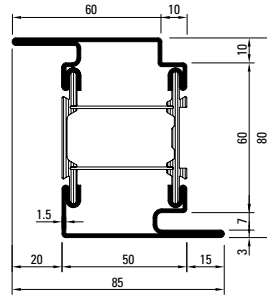
Doors



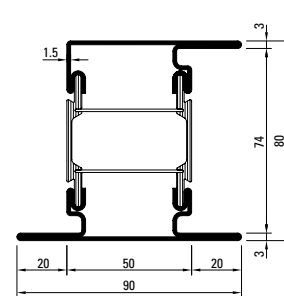
680.013 Z



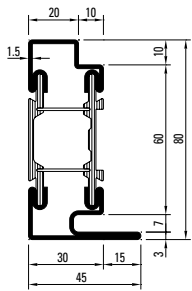
680.114 Z



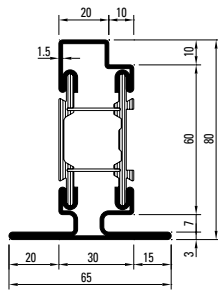
680.416 Z



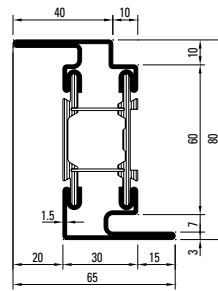
680.650 Z



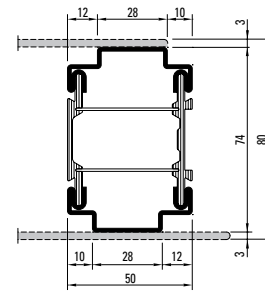
680.010 Z



680.110 Z



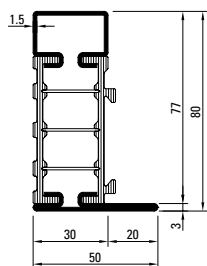
680.411 Z



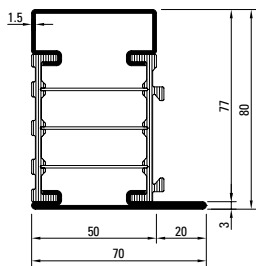
680.050 Z

Z = made from hot-dip galvanised strip

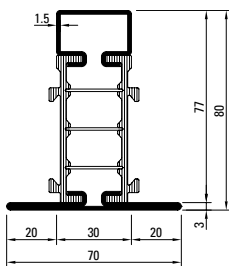
Fixed glazings



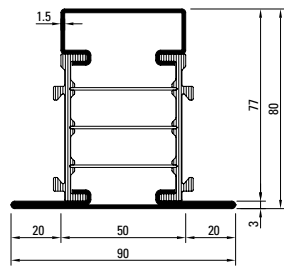
681.630 Z



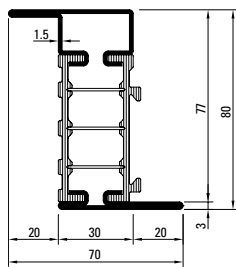
681.650 Z



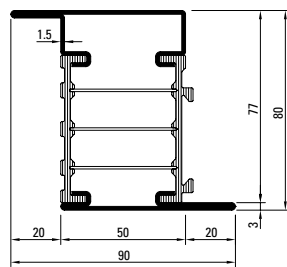
682.630 Z



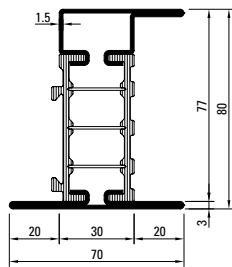
682.650 Z



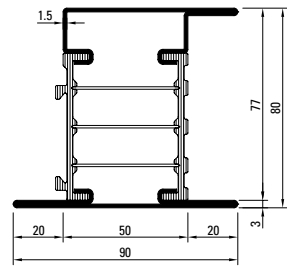
683.630 Z



683.650 Z

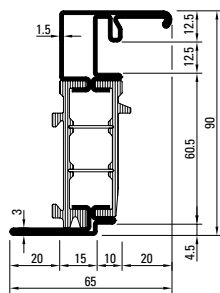


685.630 Z

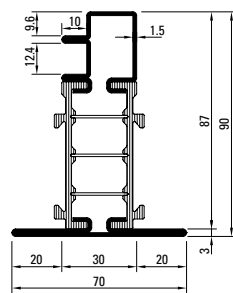


685.650 Z

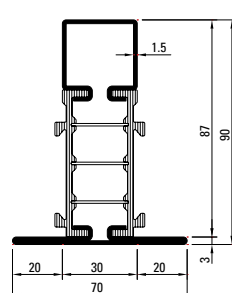
Windows



680.900 Z



680.901 Z



680.902 Z

Janisol Arte

Windows and glazing



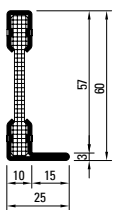
Contemporary construction in accordance with the guidelines for protecting historic buildings and monuments

Slimline solution for sustainable modernisation of buildings. The multiple award-winning Janisol Arte from Jansen not only offers architects and developers an attractive alternative for the renovation of industrial and loft glazing, it also provides modern solutions for private homes. The extremely slimline steel profile meets contemporary thermal insulation requirements and has achieved CE classification in accordance with EN 14351-1 with outstanding values. This means that glass can be created with small modular dimensions

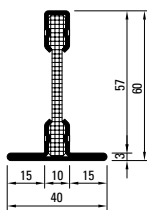
and a high level of stability. Window dimensions of up to 800 by 2200 mm are possible. The profiles have face widths of between 25 and 40 mm and a face width dimension for the frame and vent profile of just 60 mm. Using Janisol Arte profiles, both inward and outward-opening units can be constructed, whether as a single or double-vent side-hung window, a single-vent bottom-hung or top-hung window, a projected top-hung window or a horizontal pivot window.



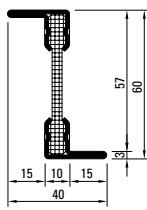
Profile range



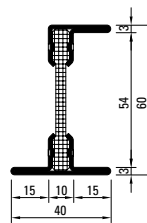
601.610
601.610 Z



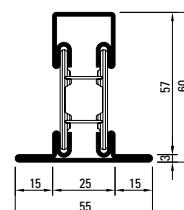
602.610
602.610 Z



603.610
603.610 Z

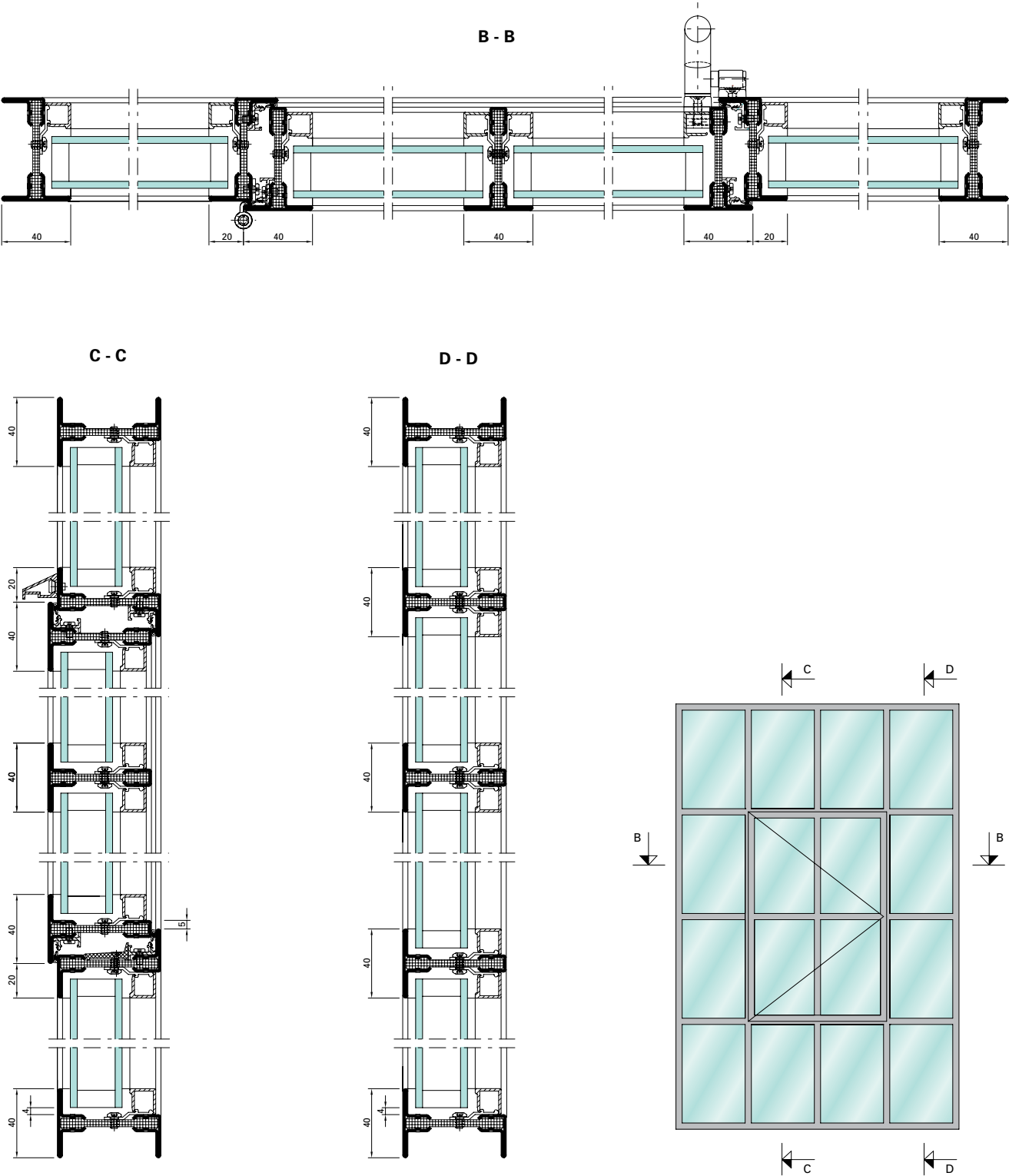


605.610
605.610 Z



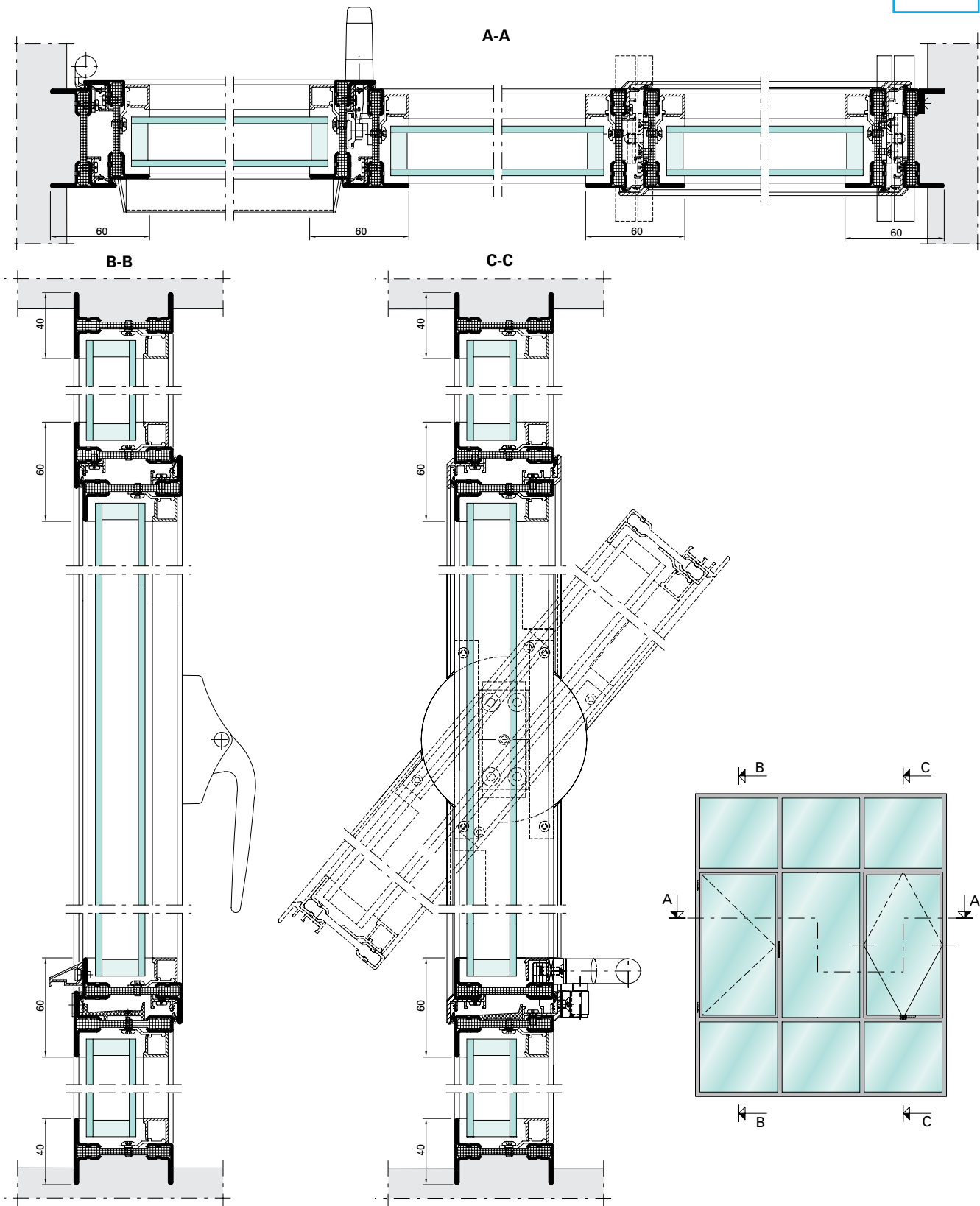
602.637
602.637 Z

Example of Janisol Arte





Example of Janisol Arte with side-hung and horizontal pivot windows



Janisol Arte Sliding doors



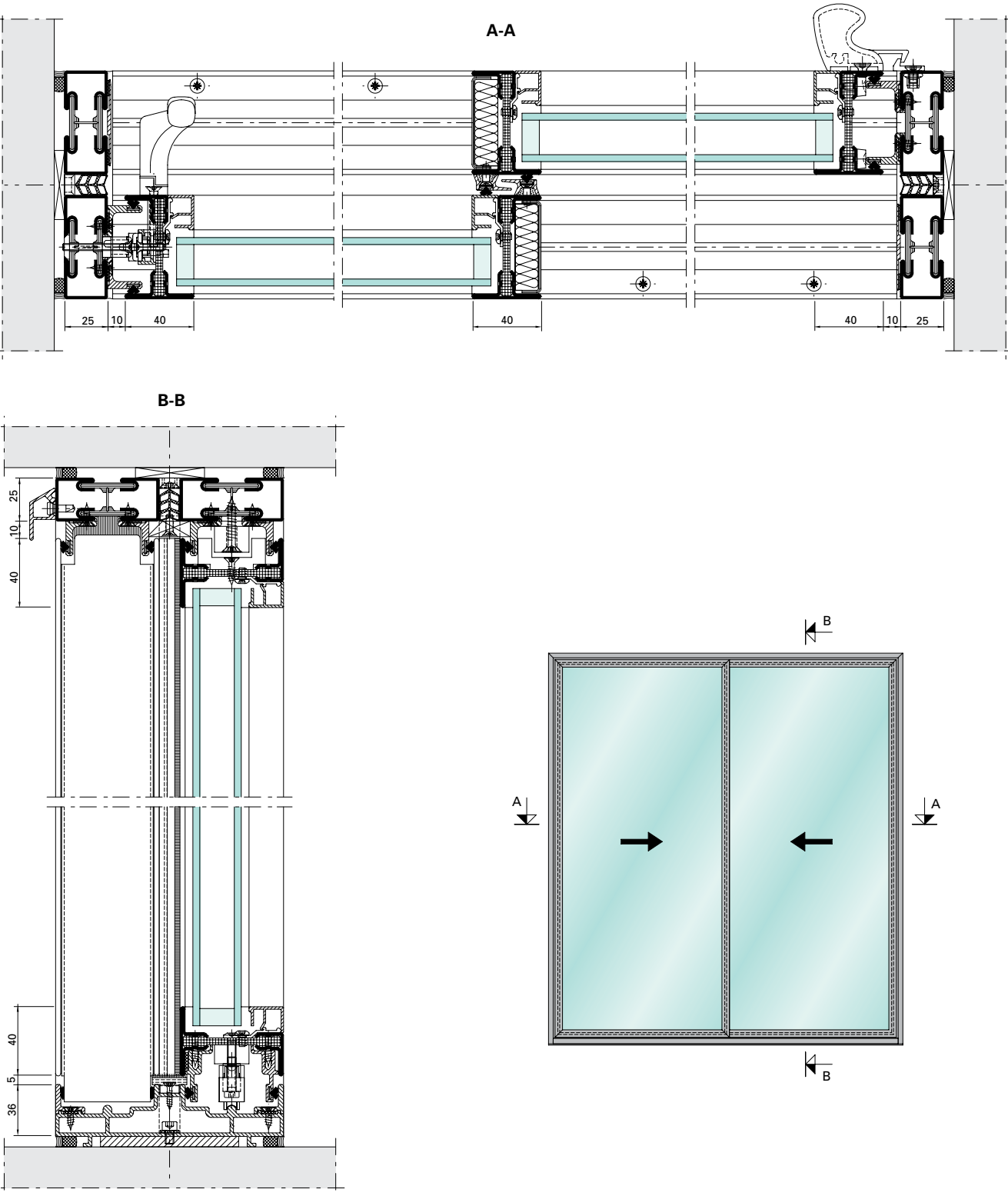
The most slender of frame profiles – now also for the entrance area

With the extremely slender Janisol Arte steel profile system, sliding doors with fine face widths and a high level of stability can be produced. Originally developed by Jansen for the reconstruction of historic windows, Janisol Arte now offers architects and developers the opportunity to create large glass fronts.

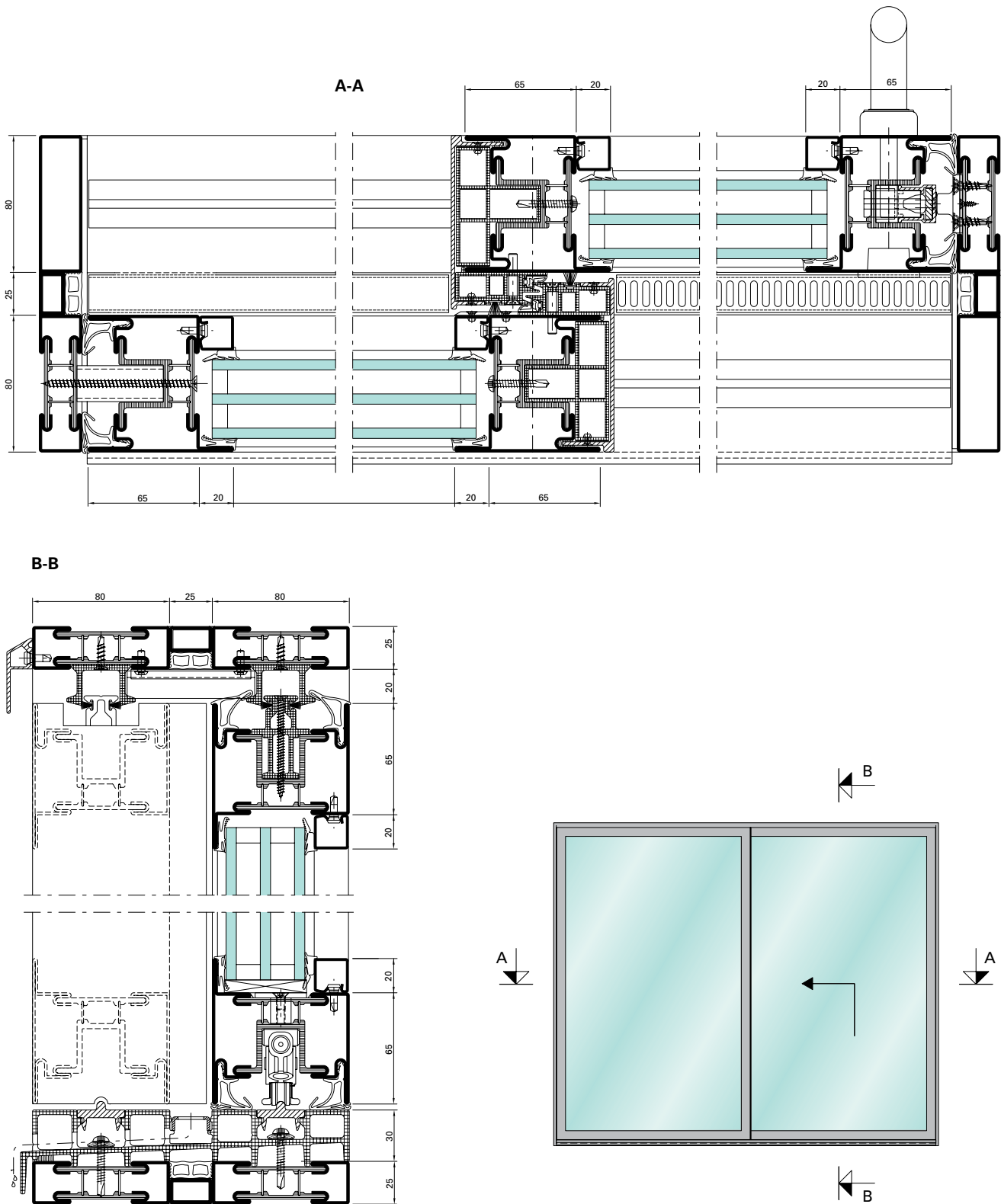
The thermally broken steel profile system enables sliding leaves with unit sizes of up to 3000 mm x 2500 mm (BxH) with a maximum leaf weight of 150 kg. In addition, a remarkable U_w value of 1.5 W/m²K can be achieved with panes of insulating glass with a thickness of 20 to 34 mm. The materials used – steel and glass fibre-reinforced high-performance plastics – are tremendously robust and 100% recyclable. In combination with welded steel half profiles, this yields stable and long-lasting frame constructions that ensure markedly increased light penetration with the narrowest of profile face widths measuring a mere 40 mm. Successfully tested, the Janisol Arte sliding door system has been CE classified in accordance with EN 14351-1.



Example of Janisol Arte sliding door



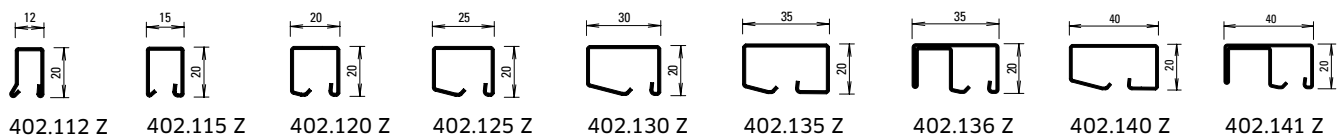
Example of Janisol lift-and-slide door



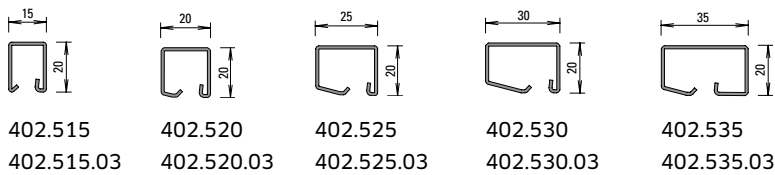
Glazing beads

Steel and aluminium

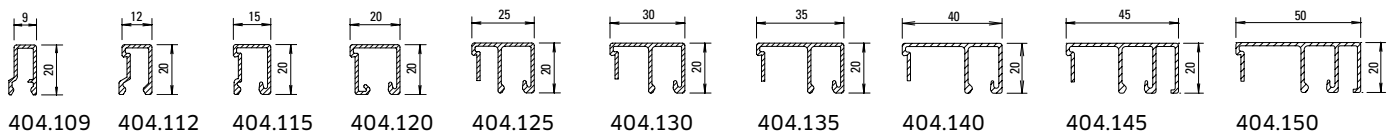
Steel glazing beads made of hot-dip galvanised strip (length 6 m)



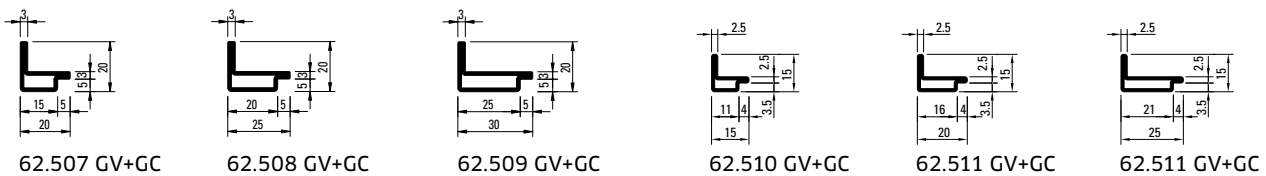
Stainless steel glazing beads (length 6 m)



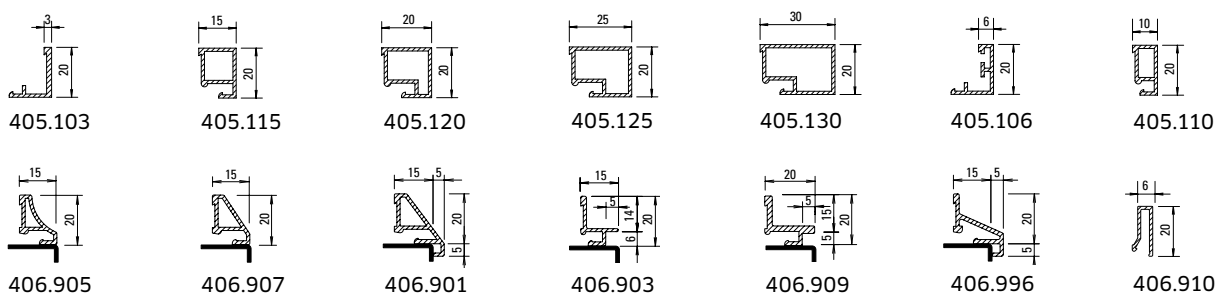
Aluminium glazing beads (length 6 m)



Angle contour steel glazing beads (length approx. 6 m)



Aluminium glazing beads (length 6 m)



System versatility: for every application

Systems	Windows	Doors	Façades	Fixed glazings	Partition walls	Conservatories	Fire protection	Thermal insulation	Safety	System specifications
Janisol/Janisol Primo Basic depth of doors 60 mm Basic depth of windows 60/64 mm	◆	◆		◆	◆	◆		◆	◆	Doors and windows CE tested, anti-finger-trap door, folding wall, burglar resistance RC3 and bullet resistance, steel and stainless steel
Janisol HI Basic depth of doors 80 mm Basic depth of windows 90 mm	◆	◆		◆	◆	◆		◆	◆	Doors and windows CE tested, Minergie tested, highly insulated, windows RC3
Janisol Arte Basic depth 60 mm	◆			◆	◆	◆		◆		Windows CE tested, inward and outward opening windows, very slim face widths
Janisol 2 Basic depth 60 mm/70 mm		◆		◆	◆		◆	◆	◆	Doors and fixed glazings, fire resistant tested EI30, smoke protection, burglar resistance, steel and stainless steel
Janisol C4 Basic depth 70 mm		◆		◆	◆		◆	◆		Doors and fixed glazings, fire resistant tested EI60 and EI90, smoke protection
VISS TV Face width 50/60 mm			◆		◆	◆		◆	◆	Mullion-transom construction for vertical glazings, dry glazing, CE tested, burglar resistance RC4 and bullet resistance
VISS TVS Face width 50/60 mm			◆		◆	◆		◆	◆	Mullion-transom construction for vertical and roof glazings, dry glazing, CE tested, burglar resistance RC4 and bullet resistance
VISS Fire Face width 50 mm			◆		◆		◆			Mullion-transom construction for vertical and roof glazings, tested for fire resistance to E90/EI90
VISS SG Face width 50/60 mm			◆		◆	◆		◆		Structural Glazing façade based on the tried-and-tested VISS system
VISS Basic / VISS I _{tra}			◆		◆			◆	◆	Construction for steel and stainless steel façades for mounting on any support
Jansen-Economy 50 Basic depth of doors 50 mm Basic depth of windows 50/58,5 mm	◆	◆		◆	◆		◆		◆	Doors and windows CE tested, anti-finger-trap door, fire resistant tested E30, smoke protection, burglar resistance, steel and stainless steel
Jansen-Economy 60 Basic depth 60 mm		◆		◆	◆		◆		◆	Doors CE tested, anti-finger-trap door, fire resistant tested E30, smoke protection, burglar resistance and bullet resistance
Standard profiles Basic depth 40, 50, 60, 80 mm	◆	◆		◆	◆					Steel profile series for double action doors, frame doors and pilaster profiles
Folding and sliding doors Basic depth 50, 60, 80 mm										Steel profiles for folding and sliding doors, automatic or manual folding, CE tested

Jansen AG

Steel Systems
Industriestrasse 34
9463 Oberriet
Schweiz
jansen.com

JANSEN
Configure to Inspire